

What You'll Need:

1. Bubble Now Machine
2. Bubble Now Bag (comes with Bubble Now machine)
3. Bubble Bag Kit and 5 gallon bucket (not included) or garbage can for the 20 Gallon XL
4. Plant material
5. Ice
6. Cold Water



If you have purchased the 20 Gallon XL Bubble Now

Follow the instructions in this pamphlet for the 5 Gallon Bubble Now, making the following considerations:

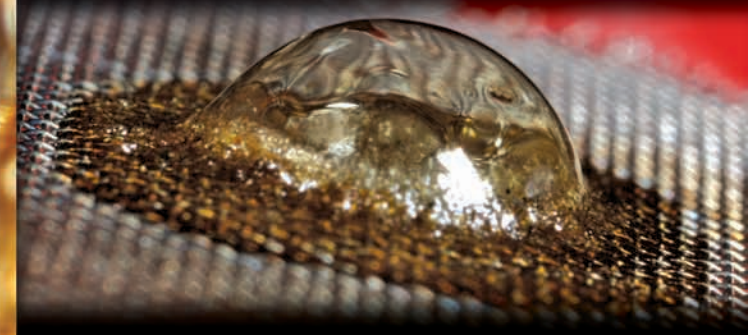
1. We recommend using the "Gentle" cycle, although some people do say that they have good results with the "Normal" cycle.
2. The Bubble Now XL has a drain pump. To operate the pump, switch the Wash & Drain Selector to "Drain" and turn the Wash Timer on.
3. The Bubble Now XL can be filled with water to about 2" to 4" below the top of the washing chamber.
4. You may wish to cover the two holes on either side of the lid with tape to prevent water from splashing out during agitation or when rinsing the machine out.

If you have any questions, feel free to give us a call at **1-866-635-8464** or visit our forums at www.fullmeltbubble.com

"If it don't bubble, it ain't worth the trouble!"



bubblebag.com



The Highest quality plant essence extractors in the world.



bubblenow

1-866-635-8464

Step 1

Place **plant material** in the Bubble Now bag. Add enough **ice** to fill the bag, then **place the bag** into your Bubble Now Machine.



Step 2

Fill your Bubble Now machine with **very cold water** and **ice** up to the line



marked "MAX" on the unit.



Step 3

Turn on your Bubble Now machine. You can adjust the time to your desired setting. We recommend a maximum of 15 minutes.

Step 4

Line the bucket with your Bubble Bags starting with the 25 micron bag, and ending with the 220 micron bag.

Step 5

When the Bubble Now has finished mixing, there is no need to wait for settling to occur. Using the drain hose, **drain the water into your Bubble Bags**.



Step 6

Gently **squeeze any remaining water out** of the Bubble Now bag. **Rinse down the inside** of the Bubble Now to make sure no plant extracts are stuck to the inside. **Drain the rinse water** into your Bubble Bags.



Step 7

Now you are ready to begin collection of your herbal extract. **Pull out the 220 micron bag** and allow the water to drain into the remaining bags. Discard the contents of this bag as the 220 micron bag is used only to catch contaminants.



Step 8

The remaining bags contain various grades of herbal extract. **Pull out each Bubble Bag, one by one, draining them back into the bucket.**



Step 9

To remove your herbal extract **turn each bag inside out and stretch it over a bowl, then scrape off the herbal extract** with a spoon or plastic card.



Step 10

Place your extract onto the pressing screen. Fold a clean, dry tea towel in half with the pressing screen in the middle. **Gently press out the moisture.** Enjoy your new herbal extract!



For more detailed instructions, check out www.bubblebag.com.